

# ARB AIR LOCKER *Air Operated Locking Differentials*

## **RD187** AMC 20, 2.73 & DN

### Specs:

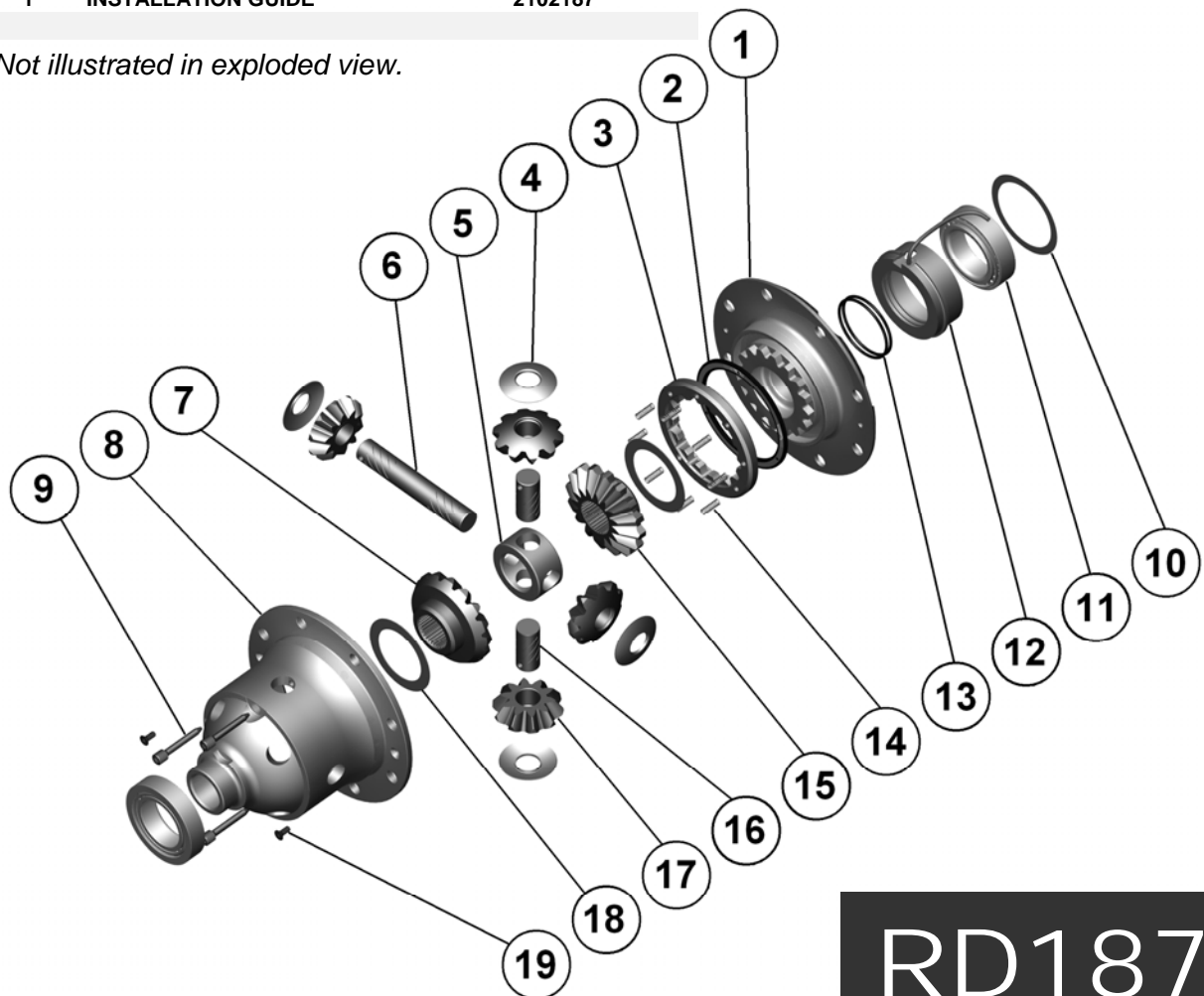
Axle Spline	29 tooth, Ø31.5mm [1.24"]
Ratio Supported	2.73 & DN
Ring Gear ID	136.6mm [5.38"]
Ring Gear OD	225.6mm [8.88"]
Ring Gear Bolts	8 bolts on Ø165.00mm [6.49"]
Ring Gear Torque	101Nm [75 ft-lb]
Backlash	0.15-0.25mm [0.006-0.010"]
Bearing Cap Torque	101Nm [75 ft-lb]

ITEM #	QTY	DESCRIPTION	PART #	NOTES
1	1	FLANGE CAP ASSEMBLY	027327	
2	1	BONDED SEAL	160702	
3	1	CLUTCH GEAR	050806	
4	4	PINION THRUST WASHER	151110	
5	1	SPIDER BLOCK	070201	
6	1	LONG CROSS SHAFT	060204	
7	1	SIDE GEAR	SEE NOTE	3
8	1	DIFFERENTIAL CASE	013027	
9	3	CROSS SHAFT RETAINING PIN	120601	
10	1	SHIM KIT	SHK010	
11	1	TAPERED ROLLER BEARING	160109	2
12	1	SEAL HOUSING ASSEMBLY	081501	
13	2	SEAL HOUSING O-RING	160227	1
14	8	RETURN SPRING	150113	
15	1	LOCKING SIDE GEAR	SEE NOTE	3
16	2	SHORT CROSS SHAFT	060403	
17	4	PINION GEAR	SEE NOTE	3
18	2	SIDE GEAR THRUST WASHER	151010	
19	2	COUNTER SUNK SCREW	200213	
*	1	BULKHEAD FITTING KIT (O-RING TYPE)	170111	
*	1	PUSH-IN FITTING (5mm to 1/8"BSPP)	170201	
*	1	AIR LINE (5mm DIA X 6m LONG)	170301	
*	1	NIPPLE (1/8" to 1/8" BSPT)	170501	
*	1	SOLENOID VALVE (12V)	180103	
*	1	SWITCH	180209	
*	1	SWITCH COVER (FRONT)	180210	
*	1	SWITCH COVER (REAR)	180211	
*	10	CABLE TIE	180301	
*	1	WARNING LABEL	210101	
*	1	BUMPER STICKER	210102	
*	1	OPERATION & SERVICE MANUAL	210200	
*	1	INSTALLATION GUIDE	2102187	

### Notes:

- 1 For replacement O-rings use only BS135 Viton 75.
- 2 For replacement bearing use Timken part # LM102949 / LM102910
- 3 Available only as complete 6 gear set # 728H231

\* Not illustrated in exploded view.



# RD187

