

ARB AIR LOCKER *Air Operated Locking Differentials*

RD136 Nissan H233B,31 SPL

Specs:

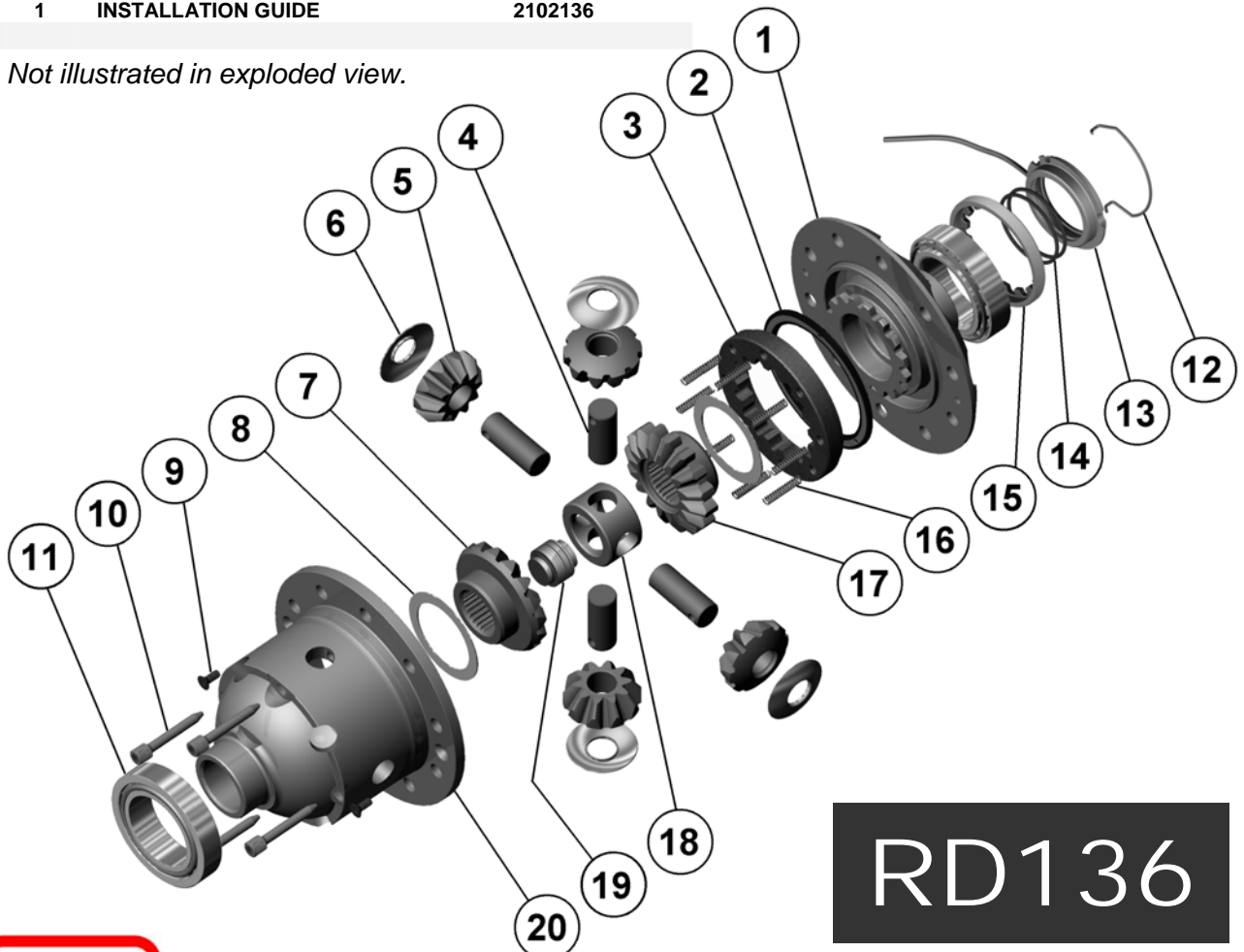
Axle Spline	31 tooth, Ø32mm [1.26"]
Ratio Supported	All
Ring Gear ID	146.0mm [5.75"]
Ring Gear Bolt Size	12mm
Ring Gear Bolts	9 bolts on Ø176mm [6.93"]
Ring Gear Torque	142Nm [105 ft-lb]
Backlash	0.15-0.20mm [0.006-0.008"]
Bearing Cap Torque	99Nm [73 ft-lb]

Notes:

- 1 For replacement O-rings use only BS136 Viton 75.
 - 2 For replacement Bearing use Timken Bearing #32010X (ARB# 160116).
 - 3 Available only as complete 6 gear set # 728H151
- Refer to seal housing set-up tech note (**Sec. 5.2**).
- Refer to pinion modification tech note (**Sec. 5.6**).

ITEM #	QTY	DESCRIPTION	PART #	NOTES
01	1	FLANGE CAP ASSEMBLY	027314	
02	1	BONDED SEAL	160703	
03	1	CLUTCH GEAR	050804	
04	4	SHORT CROSS SHAFT	060403	
05	4	PINION GEAR	SEE NOTE	3
06	4	PINION THRUST WASHER	151110	
07	1	SIDE GEAR	SEE NOTE	3
08	2	SIDE GEAR THRUST WASHER	151010	
09	2	COUNTERSUNK SCREW	200213	
10	4	RETAINING PIN	120601	
11	-	TAPERED ROLLER BEARING	NOT SUPPLIED	2
12	1	SEAL HOUSING RETAINING CLIP	150601	
13	1	SEAL HOUSING ASSEMBLY	081901	
14	2	SEAL HOUSING O-RINGS	160207	1
15	1	ADJUSTER NUT	100102	
16	12	RETURN SPRINGS	150113	
17	1	SPLINED SIDE GEAR	SEE NOTE	3
18	1	SPIDER BLOCK	070201	
19	1	THRUST BLOCK	110502	
20	1	DIFFERENTIAL CASE	013014	
*	9	RING GEAR BOLT SPACERS	4581061	
*	1	BULKHEAD FITTING KIT (O-RING TYPE)	170111	
*	1	PUSH-IN FITTING (5mm to 1/8" BSPP)	170201	
*	1	NIPPLE (1/8" to 1/8" BSPT)	170501	
*	1	AIR LINE (5mm DIA X 6m LONG)	170301	
*	1	SOLENOID VALVE (12V)	180103	
*	1	SWITCH	180209	
*	1	SWITCH COVER (FRONT)	180210	
*	1	SWITCH COVER (REAR)	180211	
*	10	CABLE TIE	180301	
*	1	WARNING LABEL	210101	
*	1	BUMPER STICKER	210102	
*	1	OPERATION & SERVICE MANUAL	210200	
*	1	INSTALLATION GUIDE	2102136	

* Not illustrated in exploded view.



RD136

